



**CEPI**

Center of Endodontics, Periodontics & Implantology, LLC

## SINUS AUGMENTATION

A key factor to implant success is the quantity and quality of available bone remaining in the potential site of implant placement. Traditionally, implant therapy on the upper back jaw has been challenging due to the lack of good bone quality and presence of an expanding sinus cavity. If you have experienced premature tooth loss or loss of supporting bone around a tooth in this region, you may not have enough bone left to place implants.

To correct this deficiency and avoid perforation of the sinus cavity, a sinus augmentation is performed to raise the floor of the sinus and develop bone for implant placement. Once healing has taken place and the available bone is restored to a satisfactory height, the periodontist may insert implants predictably.

As a result, additional support for the implant is formed and increases the chances of implant success.

*Fatima Robertson, DDS, PA*

*915 West Exchange Pkwy, Ste. 280 Allen, TX 75013*

*214-509-9011/469-519-0124 fax*

*dr.robertson@cepi-allen.com*

*[www.cepi-allen.com](http://www.cepi-allen.com)*

*Diplomate, American Board of Periodontology*



**Preoperative**

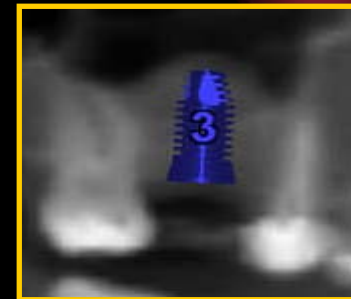


**Postoperative**



Arrow represents original sinus floor

**Future Implant Site**



*Laying the Framework for a Beautiful, Healthy Smile...*